

The LWA1 Radio Telescope

S.W. Ellingson, G.B. Taylor, J. Craig, J. Hartman, J. Dowell, C.N. Wolfe, T.E. Clarke, B.C. Hicks, N.E. Kassim, P.S. Ray, L. J Rickard, F.K. Schinzel and K.W. Weiler

August 22, 2012

Revision in response to review.

This document has been submitted to the IEEE for consideration for publication.

© 2012 IEEE

The LWA1 Radio Telescope

S.W. Ellingson, *Senior Member, IEEE*, G.B. Taylor, J. Craig, *Member, IEEE*, J. Hartman, J. Dowell, C.N. Wolfe, *Student Member, IEEE*, T.E. Clarke, B.C. Hicks, *Member, IEEE*, N.E. Kassim, P.S. Ray, L. J Rickard, F.K. Schinzel and K.W. Weiler

Abstract—LWA1 is a new radio telescope operating in the frequency range 10–88 MHz, located in central New Mexico. The telescope consists of 258 pairs of dipole-type antennas whose outputs are individually digitized and formed into beams. Simultaneously, signals from all dipoles can be recorded using one of the instrument’s “all dipoles” modes, facilitating all-sky imaging. Notable features of the instrument include high intrinsic sensitivity (≈ 6 kJy zenith system equivalent flux density), large instantaneous bandwidth (up to 78 MHz), and 4 independently-steerable beams utilizing digital “true time delay” beamforming. This paper summarizes the design of LWA1 and its performance as determined in commissioning experiments. We describe the method currently in use for array calibration, and report on measurements of sensitivity and beamwidth.

Index Terms—Antenna Array, Beamforming, Radio Astronomy.

I. INTRODUCTION

LWA1 (“Long Wavelength Array Station 1”; Figure 1) is a new radio telescope operating in the frequency range 10–88 MHz, collocated with the Very Large Array (VLA; 107.63° W, 34.07° N) in central New Mexico. The telescope consists of an array of 258 pairs of dipole-type antennas whose outputs are individually digitized and formed into beams. The principal technical characteristics of LWA1 are summarized in Table I. LWA1 is so-named because it is envisioned to be the first “station” of a 53-station long-baseline aperture synthesis imaging array known as the Long Wavelength Array (LWA), described in [1], [2]. Although the future of the LWA is uncertain, LWA1 was completed in Fall 2011 [3] and is currently operating under the U.S. National Science Foundation’s “University Radio Observatories” program.

Contemporary radio telescopes which are also capable of operating in LWA1’s 10–88 MHz frequency range include GEETEE (35–70 MHz), located in Gauribidanur, India [4]; UTR-2 (5–40 MHz), located in the Ukraine [5]; VLA (74 MHz) [6]; and LOFAR (10–80 MHz), another new telescope located in the Netherlands [7], [8]. LWA1 and LOFAR are both digital beamforming arrays consisting of large numbers of dipole-type antennas and comparable sensitivity; however the entire collecting area of LWA1 is contained within a single station, whereas LOFAR is an aperture synthesis

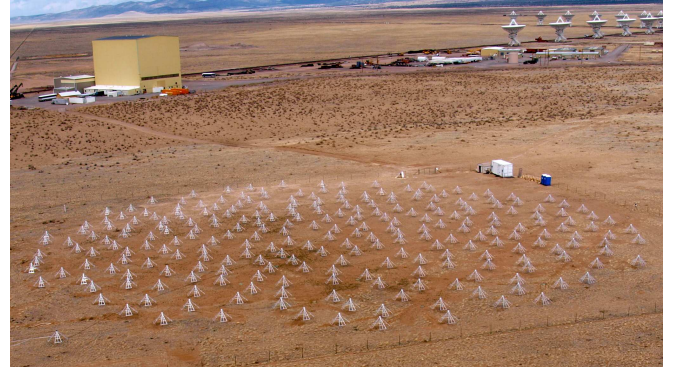


Fig. 1. LWA1. The white cargo container beyond the station array is the electronics shelter. Visible in the background is the center of the VLA.

array consisting of many smaller stations distributed over a large region of Northern Europe. See [3] for a more detailed comparison of these instruments.

This paper describes LWA1 design and performance as determined in commissioning experiments. First, in Section II, we provide a brief primer on radio astronomy below 88 MHz in order to provide context for subsequent discussion. Section III summarizes the design of LWA1. Section IV describes a simple method for array calibration which we have found to be effective. This method uses single-dipole observations of strong discrete astronomical sources correlated with observations made using an “outtrigger” dipole located tens to hundreds of wavelengths away. Section V reports the results of beamforming experiments, and compares the results to those predicted in previous LWA1 design and simulation studies [1], [9]. Conclusions are presented in Section VI.

II. BACKGROUND: RADIO ASTRONOMY BELOW 88 MHz

The science applications of compact array beamforming and small-aperture imaging below 88 MHz are summarized in [10] and [11]; they include the study of pulsars, Jupiter, the Sun, and the Earth’s ionosphere; studies of the interstellar medium including radio recombination lines and electron density variations; cosmology through observations of the redshifted 21 cm line of neutral hydrogen; and searches for as-yet undetected phenomena including radio emission from extrasolar planets, astrophysical explosions from a variety of mechanisms, and other sources of time-variable or impulsive emission.

Key issues for antenna and receiver design for radio astronomical instrumentation operating in this frequency regime are described in [12], which we briefly summarize here. In this frequency range, natural external noise is dominated

S.W. Ellingson and C.N. Wolfe are with the Bradley Dept. of Electrical & Computer Engineering, Virginia Polytechnic Institute & State University, Blacksburg, VA 24061 USA (e-mail: ellingson@vt.edu). G.B. Taylor, J. Craig, J. Dowell, L. J Rickard, and F.K. Schinzel are with the Dept. of Physics & Astronomy, University of New Mexico, Albuquerque, NM 87131 USA (e-mail: gbtaylor@unm.edu). J. Hartman is with NASA Jet Propulsion Laboratory, Pasadena, CA 91109. T.E. Clarke, B.C. Hicks, N.E. Kassim, and P.S. Ray are with the U.S. Naval Research Laboratory, Washington, DC 20375 (e-mail: namir.kassim@nrl.navy.mil). K.W. Weiler is with Computational Physics, Inc., Springfield, VA 22151.

Beams	4, independently-steerable
Polarizations	Dual linear
Tunings	2 center frequencies per beam, independently-selectable
Tuning Range	24–87 MHz ($>4:1$ sky-noise dominated), 10–88 MHz usable
Bandwidth	$\leq 16 \text{ MHz} \times 2 \text{ tunings} \times 4 \text{ beams}$
Spectral Resolution	Time-domain “voltage” recording; also real-time 32-channel spectrometer.
Beam FWHM	$< 3.2^\circ \times [(74 \text{ MHz})/\nu]^{1.5}$ (upper bound independent of Z)
Beam SEFD	$\approx 6 \text{ kJy}$ at $Z = 0$; depends on pointing, celestial coordinates, & frequency; see Figure 11
Beam Sensitivity	$\approx 8 \text{ Jy}$ (5σ) for 1 s, 16 MHz, $Z = 0$ (inferred from SEFD)
All-Dipoles Modes	“TBN”: 70 kHz from every dipole, continuously “TBW”: 78 MHz from every dipole, in 61 ms “bursts” every 5 min

Notes: Z is zenith angle. ν is frequency. $1 \text{ Jy} = 10^{-26} \text{ W m}^{-2} \text{ Hz}^{-1}$. FWHM is full-width at half-maximum. SEFD is system equivalent flux density (see text). Additional information available at <http://lwa1.info> and <http://lwa.unm.edu>.

TABLE I
LWA1 TECHNICAL CHARACTERISTICS.

by the very bright Galactic synchrotron background, which generates antenna temperatures on the order of 10^3 K to 10^5 K , increasing with decreasing frequency. Contributions from the cosmic microwave background ($\approx 3 \text{ K}$) and other sources are also present, but are typically negligible in comparison. Man-made noise (other than deliberate radio signals) is also negligible for the rural locations at which these instruments are typically deployed. Mechanically-steered dishes prevalent at higher frequencies are not desirable due to the very large size required to achieve acceptably narrow beamwidth. Instead, arrays of low-gain dipole-type antennas are used to facilitate electronic or digital beamforming.¹ Individual dipole-type antennas typically have impedance bandwidth which is much less than the approximately 9:1 bandwidth implied by a tuning range of 10–88 MHz; however this is not a limitation as long as receiver noise temperature is sufficiently small that the ratio of external to internal noise is large after the antenna impedance mismatch. A dipole-type antenna combined with a receiver having system temperature less than $\approx 500 \text{ K}$ is able to achieve the best possible (i.e., Galactic noise-limited) sensitivity over a large portion of the 10–88 MHz frequency range. This is demonstrated by example in [13] and later in this paper.

External-noise dominance makes the noise measured at the output of antenna-receiver channels significantly correlated [9]. The dominance of this correlation over internal noise complicates array calibration because the strongest discrete astrophysical sources which would otherwise be suitable as “incident plane wave” calibrators are orders of magnitude weaker than the non-uniform Galactic noise background. The method described in Section IV of this paper bypasses this

¹The VLA 74 MHz system uses the 27 25-m dishes of the VLA with dipole feeds, which yields very low aperture efficiency. This is tolerated as it allows reuse of existing high-frequency infrastructure.

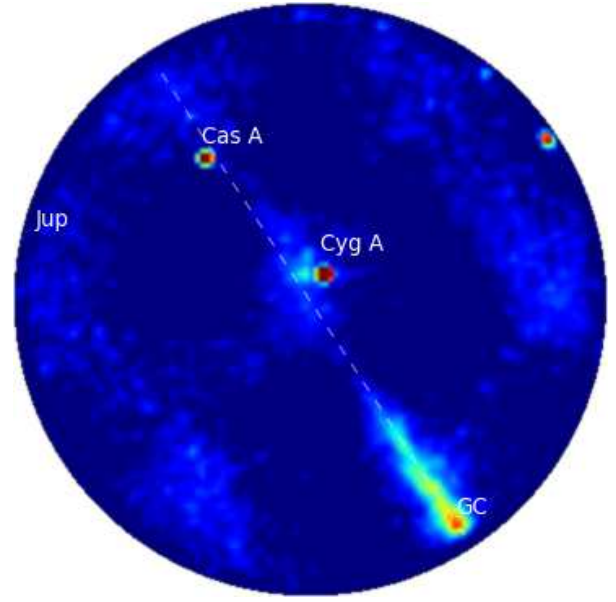


Fig. 2. Intensity of the 74.03 MHz radio sky as measured using LWA1’s PASI backend (see Section III), 20:00 local sidereal time (LST). The center of this display is the zenith, the perimeter is the horizon, North is up, East is left. The color scale ranges from $\sim 2000 \text{ K}$ (dark blue) to $\sim 250,000 \text{ K}$ (red). The Galactic center (“GC” in this display) is prominent near the bottom of the figure, and the Galactic plane extends high into the sky, as indicated by the dashed line. Bandwidth: 75 kHz, Integration time: 5 s. “Jup” is Jupiter, which is located just below the horizon, and the unlabeled source in the upper right is interference. The lighter blue regions along the lower left and upper right are image noise associated with the point spread function, which has not been deconvolved from these images.

problem by correlating antennas in the array with a distant outrigger antenna, which has the effect of suppressing the contribution of bright features which are distributed over large angular extent – in particular, the Galactic background emission which is concentrated along the Galactic plane and which is brightest at the Galactic center (see Figures 2 and 3).

Separately from difficulty in calibration, external noise correlation significantly desensitizes the beams formed by the array [9]. Furthermore, the extent to which a beam is desensitized is a function of sidereal time, since the Galactic noise intensity varies both spatially and diurnally, as is shown in Figures 2 and 3. This is particularly frustrating as absolute calibration of in-beam flux density is often desired, but now depends on both pointing in zenith angle (Z) due to the beam pattern variation as a function of Z , and with sidereal time due to the spatially- and diurnally-varying Galactic noise intensity arriving through sidelobes.

III. DESIGN

Antennas. LWA1 antennas are grouped into “stands”, each consisting of a linear-orthogonal pair of antennas, feedpoint-mounted electronics, a mast, and a ground screen as shown in Figure 4. Each antenna is a wire-grid “bowtie” about 3 m long, with arms bent downward at 45° from the feedpoint in order to improve pattern uniformity over the sky. The feedpoint is located 1.5 m above ground. The ground screen is a $3 \text{ m} \times 3 \text{ m}$ wire grid with spacing $10 \text{ cm} \times 10 \text{ cm}$ and wire radius of about

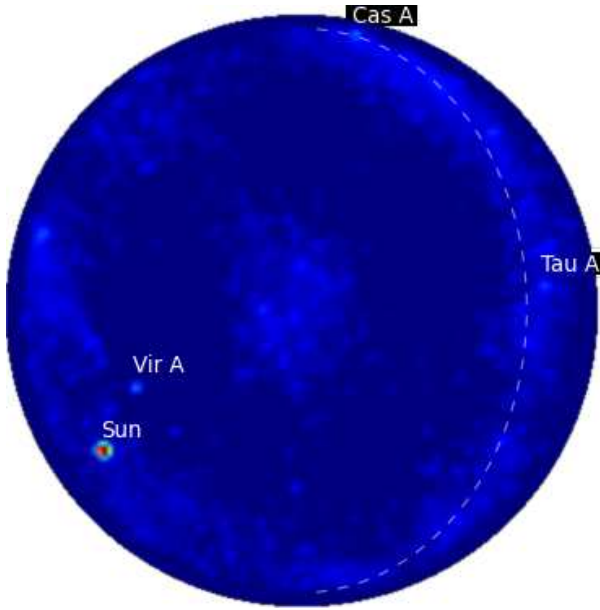


Fig. 3. Same as Figure 2, but 14 hours later (10:00 LST). At this time, the Galactic center is below the horizon and the Galactic plane is low on the horizon.

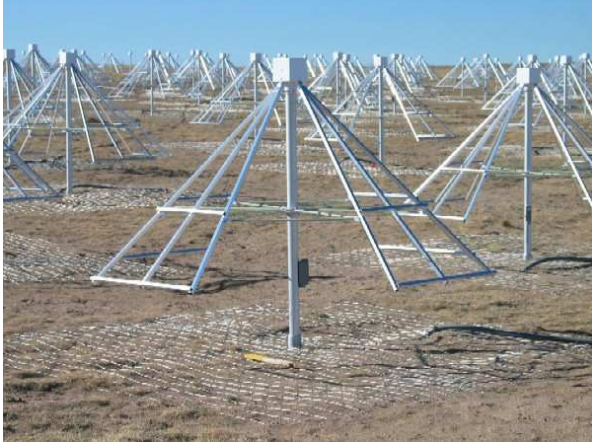


Fig. 4. LWA1 antenna stands. Front end electronics are enclosed in the white box at the feedpoint. Signals exit through coaxial cables inside the mast. Each stand is about 1.5 m high.

1 mm. The primary purpose of the ground screen is to isolate the antenna from the earth ground, whose characteristics vary significantly as function of moisture content. Zenith values of the effective aperture of a single dipole within a stand, including loss due to mismatch with the 100Ω input impedance of the front end electronics, are estimated to be 0.25 m^2 , 8.72 m^2 , and 2.48 m^2 for 20 MHz, 38 MHz, and 74 MHz, respectively [9]. However values for the actual *in situ* antennas are found to vary on the order of 25% from antenna to antenna due to mutual coupling. Additional details of the design and analysis can be found in [9].

Front end electronics. Each dipole is terminated into a pair of commercial InGaP HBT MMIC amplifiers (Mini-Circuits GALI-74) in a differential configuration, presenting a 100Ω balanced load to the antenna. This is followed by a passive

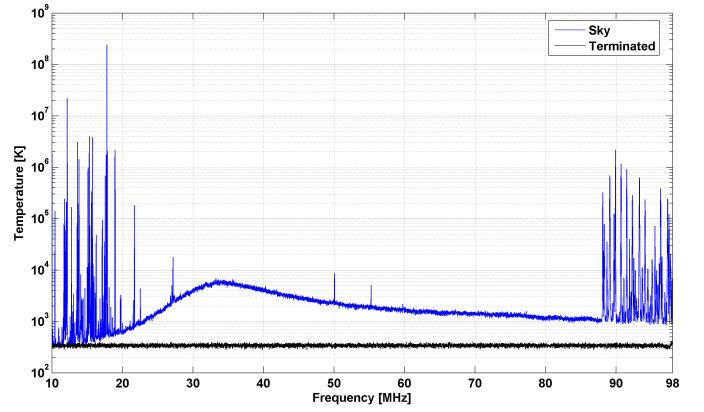


Fig. 5. Power spectral density measured by an LWA1 receiver, calibrated to the antenna terminals. *Top curve:* Incident power density (spikes are human-generated signals); *Bottom curve:* Same measurement made with a short circuit termination at the input, which provides an estimate of the noise contribution from the front end electronics. Spectral resolution: 6 kHz. Integration time: 10 s. Early afternoon local time.

balun which produces a 50Ω single-ended signal suitable for transmission over coaxial cable, plus some additional gain to overcome cable loss. The total gain, noise temperature, and input 1 dB compression point of the resulting “active balun” front ends are approximately 36 dB, 300 K, and -18 dBm respectively, and are approximately independent of frequency over 10–88 MHz. The gain and noise temperature of the feedpoint electronics are such that they dominate the noise temperature of the complete receiver chain, which is much less than the antenna temperature as is desirable (See Section II). The 1 dB compression point has been found to be satisfactory at the LWA1 site. Although higher 1 dB compression would be better, this would be difficult to achieve without compromising noise temperature. Additional information on design requirements for the front end electronics is available in [14]. Figure 5 shows the measured power spectral density from the antenna (including impedance mismatch) and the front end electronics separately, confirming an internal noise temperature of about 300 K, 4:1 external noise dominance over 24–87 MHz,² and negligible level of intermodulation.

Array Geometry. LWA1 consists of 256 antenna stands (512 antennas) within a 100 m (East-West) \times 110 m (North-South) elliptical footprint, plus two stands (4 antennas) which lie outside this footprint (the “outriggers”). The arrangement of stands is shown in Figure 6. The station diameter and number of stands per station were originally determined from an analysis of requirements for the LWA aperture synthesis imaging array, as detailed in [1], [2]. However, these choices are also appropriate for the present single-station instrument, as is demonstrated in this paper. This choice of station aperture and number of stands results in a mean spacing between stands of about 5.4 m, which is 0.36λ and 1.44λ at 20 MHz and 80 MHz respectively. To suppress aliasing, antennas are

²It should be noted that the Galactic background-dominated antenna temperature varies diurnally over a range of about 35% due to the rotation of the Earth (see [13] for an illustration); as a result the external noise dominance varies slightly over a 24-hour period.

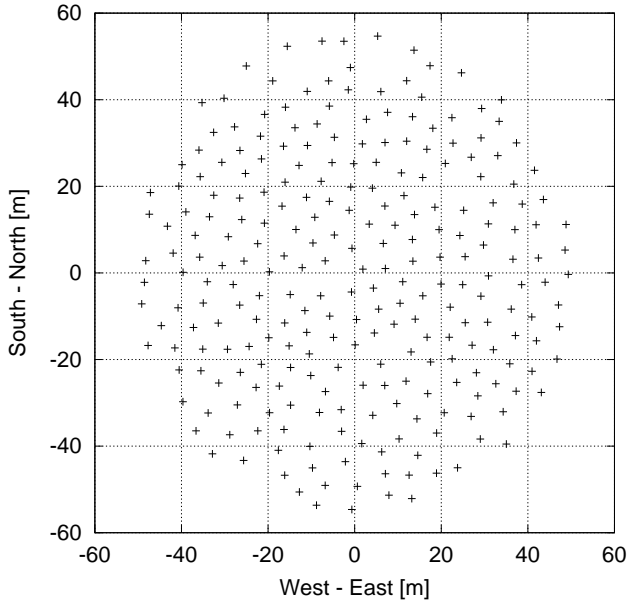


Fig. 6. Arrangement of stands in the LWA1 array. The minimum distance between any two masts is 5 m (0.33λ , 0.63λ , and 1.23λ at 20 MHz, 38 MHz, and 74 MHz, respectively). All dipoles are aligned North-South and East-West. Outrigger stands are not shown.

arranged in a pseudo-random fashion, with a minimum spacing constraint of 5 m in order to facilitate maintenance. The elongation of the station aperture in the North-South direction improves main lobe symmetry for pointing towards lower declinations, including the Galactic Center, which transits at $Z \approx 63^\circ$ as seen from the site.

Cable System. Connections between the front end electronics and the electronics shelter are by coaxial cables having lengths between 43 m and 149 m (excluding outriggers). These cables have loss of about -0.11 dB/m at 88 MHz, and dispersive delays (that is, frequency-dependent delays in addition to the delay implied by the velocity factor) given by [15], [16]:

$$(2.4 \text{ ns}) \left(\frac{l}{100 \text{ m}} \right) \left(\frac{\nu}{10 \text{ MHz}} \right)^{-1/2}, \quad (1)$$

where l is length and ν is frequency. Thus the signals arriving at the electronics shelter experience unequal delays, losses, and dispersion. These can be corrected either “in line” in the station’s digital processor (see below) or, for the all-dipoles modes, as a post-processing step. In the current real-time beamforming implementation, the non-uniform dispersive delays are compensated for the center frequency of the highest-frequency tuning in a beam; thus there is some error over the bandwidth of the beam, and additional dispersion error for the lower-frequency tuning in the same beam.

Receivers. Upon arrival in the shelter, the signal from every antenna is processed by a direct-sampling receiver comprised of an analog section consisting of only gain and filtering, a 12-bit analog-to-digital converter (A/D) which samples 196 million samples per second (MSPS), and subsequent digital processing to form beams and tune within the digital passband. Digitization using fewer than 12 bits would be sufficient

[14], but the present design eliminates the need to implement gain control in the analog receivers and provides generous headroom to accommodate interference when it becomes anomalously large. The choice of 196 MSPS ensures that strong radio frequency interference (RFI) from the 88–108 MHz FM broadcast band (see Figure 5) aliases onto itself, with no possibility of obscuring spectrum below 88 MHz. To accommodate the various uncertainties in the RFI environment, analog receivers can be electronically reconfigured between three modes: A full-bandwidth (10–88 MHz) uniform-gain mode; a full-bandwidth dual-gain mode in which frequencies below about 35 MHz can be attenuated using a shelf filter³; and a 28–54 MHz mode, which serves as a last line of defense should RFI above and/or below this range become persistently linearity-limiting. In addition, the total gain in each mode can be adjusted over a 60 dB range in 2 dB steps, allowing fine adjustments to optimize the sensitivity-linearity tradeoff. Use of the 28–54 MHz mode has not been required to date.

Digital Beamforming. A detailed description of the LWA1 digital processor is provided in [17] and is summarized here. Beams are formed using a time-domain delay-and-sum architecture. Delays are implemented in two stages: An integer-sample “coarse” delay is applied using a first-in first-out (FIFO) buffer operating on the A/D output samples, followed by a 28-tap finite impulse response (FIR) filter that implements an all-pass subsample delay. The filter coefficients can be also specified by the user, allowing the implementation of beams with custom shapes and nulls. The delay-processed signals are added to the signals from other antennas processed similarly to form beams. Four dual-polarization beams are constructed in this fashion, each fully-independent and capable of pointing anywhere in the sky. Each beam is subsequently converted to two independent “tunings” of up to 16 MHz bandwidth (4-bits “I” + 4-bits “Q” up to 19.6 MSPS) each, with each tuning having a center frequency independently-selectable from the range 10–88 MHz. Both polarizations and both tunings of a beam emerge as a single stream of user datagram protocol (UDP) packets on 10 Gb/s ethernet. Thus there are four ethernet output cables, with each one representing two center frequencies from a particular pointing on the sky. The maximum data rate (ignoring protocol bits) on each ethernet cable carrying beam data is therefore $19.6 \text{ MSPS} \times 8 \text{ bits/sample} \times 2 \text{ polarizations} \times 2 \text{ tunings} = 627.2 \text{ Mb/s}$.

All-Sky Modes. Simultaneously with beamforming, LWA1 is able to coherently capture and record the output of all its A/Ds, where each A/D corresponds to one antenna. This can be done in two distinct modes. The “transient buffer – wideband” (TBW) mode allows the raw (≈ 78 MHz) 12-bit output of the A/Ds to be collected in bursts of 61 ms at a time, and ≈ 5 minutes is required to write out the captured samples. The “transient buffer – narrowband” (TBN) mode, in contrast, allows a single tuning of ≈ 70 kHz bandwidth to be recorded continuously for up to 20 hours. These two modes share the same 10 Gb/s ethernet output from the digital processor, and thus are mutually exclusive. However, the TBW/TBN output

³A “shelf filter” is a filter which has two adjacent passbands, with one passband (the shelf) having higher attenuation than the other.

is distinct from the four beam outputs and runs simultaneously with all four beams.

Data Recorders/Spectrometers. The limited data rate of the internet connection from the LWA1 site makes data transfer from the site impractical for observations longer than a few minutes. Instead, each beam output and the TBW/TBN output is connected to a dedicated data recorder (DR). A DR is a computer that records the UDP packets to a “DR storage unit” (DRSU). Currently, a DRSU consists of five 2 TB drives (10 TB total) in a 1U rack-mountable chassis, configured as an eSATA disk array. Each DR can host 2 DRSUs. At the maximum beam bandwidth, each DRSU has a capacity of about 30 hours of observation. The data saved is fully coherent and Nyquist-sampled. Alternatively, the DRs can be used in “spectrometer mode” in which they continuously compute 32-channel⁴ fast Fourier transforms (FFTs) on the incoming beam data independently for each beam and tuning, and then time-average the FFT output bins to the desired time resolution. This results in a dramatic reduction in data volume, but is not suitable for all observing projects.

PASI. The “Prototype All-Sky Imager” (PASI) is a fully-polarimetric software-defined correlator/imager currently operational at LWA1 using the TBN data stream. It consists of a cluster of 4 server-class computers with Nehalem multicore processors interconnected by an Infiniband switch. PASI images nearly the whole sky in the Stokes I and $|V|$ parameters many times per minute, continuously and in real time, with an average duty cycle of better than 95%. It does this by cross-correlating the dipole data streams, producing a sampling of “visibilities” within the station aperture. These visibilities are then transformed into sky images using the NRAO’s Common Astronomy Software Applications (CASA) software library.⁵ Figures 2 and 3 were obtained from PASI.

IV. ARRAY CALIBRATION

In this section we describe the technique currently in use to calibrate the array for real-time beamforming. Since LWA1 uses delay-and-sum beamforming, the problem is to determine the set of delays which, when applied to the dipole (A/D) outputs, results in a beam with maximum directivity in the desired direction, subject to no other constraints. (In [9], this is referred to as “simple” beamforming. Other approaches are possible but are not considered in this paper.) In principle these delays can be estimated *a priori*, since the relevant design values (in particular, cable lengths) are known in advance. In practice this does not work well due to errors in presumed cable lengths and the accumulation of smaller errors associated with distribution of signals within equipment racks. Thus, delays must be measured using external stimulus signal(s) while the instrument is in operation.

The approach used here is to decompose the problem into a set of narrowband calibration problems which are solved using data collected using LWA1’s TBN mode, and then to extract delays by fitting a model of the presumed cable response (including dispersion) to the measured phase responses. The

narrowband decomposition is justified by the fact that the maximum time-of-flight between any two antennas in the station array is ≤ 367 ns, which is much less than the TBN inverse bandwidth $(70 \text{ kHz})^{-1} \approx 14 \mu\text{s}$. As described below, the outriggers play an important role in the calibration; the maximum time-of-flight between any antenna in the station array and the outrigger (maximum separation ≈ 390 m) is $\leq 1.3 \mu\text{s}$.

The narrowband procedure is described in rigorous mathematical detail in [18], and summarized here. Each narrowband calibration relies on the ability to identify the response due to a point source in the array output. This is confounded by the problem that there are typically multiple bright sources present in the sky, and (as explained in Section II) the problem that Galactic noise dominates the system temperature and thus appears in the data as a bright, non-uniformly distributed source. To suppress the effect of distributed features (including the Galactic center and Galactic plane) as well as discrete sources other than the source of interest, we use a “fringe rate filtering” technique. Fringe rate filtering is essentially a simple narrowband version of the delay / delay-rate filtering technique of Parsons & Backer (2009) [19]. In this technique, each dipole in the array is correlated with a corresponding outrigger dipole. The electrically-large spacing makes the correlation relatively insensitive to spatial structure in the sky noise intensity having large angular scales (see [9] for examples.) The contributions to the correlation due to individual discrete sources exhibit time-varying phase due to the apparent rotation of the sky; in astronomical parlance, these source-dominated correlations are referred to as “fringes”; see Figure 7 for an example. The rate of phase rotation in the fringes depends on the positions of the antennas being correlated relative to the direction to the sources. A time-to-frequency Fourier transform of the correlation over an interval greater than the reciprocal of the smallest source-specific fringe rate yields a “fringe rate spectrum”, in which discrete sources are apparent as localized components; an example is shown in Figure 8. “Fringe rate filtering” refers to the process of selecting just one of these components, suppressing all others (which can be done by matched filtering (“fringe stopping”) in the time domain or by excision in the fringe rate domain); the resulting correlation then represents the response of just one source. This of course presumes that sources are sufficiently separated in fringe rate: This is one reason for the use of outriggers, since fringe rate is proportional to antenna separation. Further improvement is possible by proper scheduling of the associated observations; that is, choosing times in which suitable sources have sufficiently different fringe rates. For completeness, the positions and strengths of the sources used in the example shown in Figures 7 and 8 are given in Table II.

This procedure is repeated for every antenna in the array, yielding a set of complex-valued coefficients associated with one direction at one frequency. One then iterates over frequency. There is currently no iteration over direction; that is, only one direction is considered. Different directions give different coefficients, for two reasons: First, because the geometrical delays are different; however these are easily equalized. The second reason is because the antenna patterns

⁴Increased to 1024 channels since this paper was originally submitted.

⁵<http://casa.nrao.edu/>

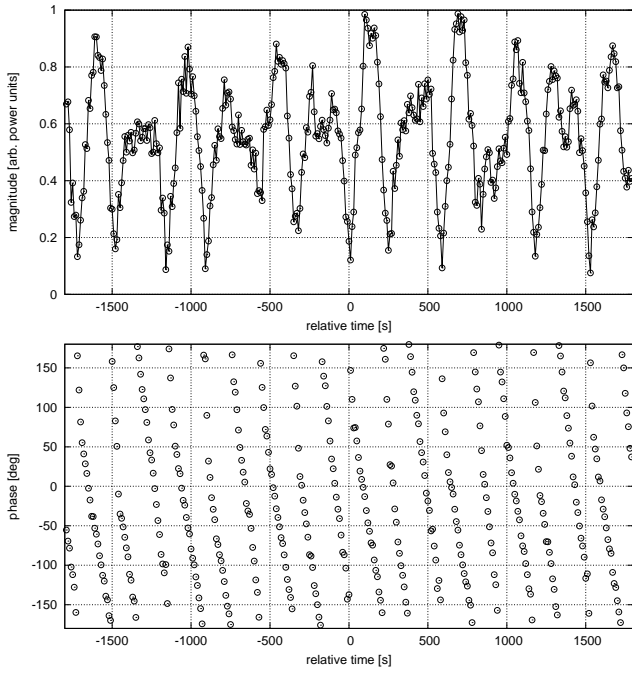


Fig. 7. Fringes between a dipole on the far West side of the array and an outrigger dipole located 389 m to the East. *Top*: Magnitude. *Bottom*: Phase. Each point represents 10 s integration. Start time is 18:50 LST.

Source	RA	Dec	Az	Z	Flux density
Cyg A	19h 59'	+40°44'	46°08'	10°11'	17.06 kJy
Cas A	23h 23'	+58°48'	38°29'	46°27'	17.13 kJy

Right ascension (RA) and declination (Dec) are given for the J2000 epoch.

Azimuth (Az) and zenith angle (Z) are indicated for the midpoint of the observation.

The flux densities are the 73.8 MHz values given in LWA Memo 155 [20], scaled to 74.03 MHz using spectral indices of -0.58 and -0.72 for Cyg A and Cas A respectively, and Cas A is further scaled by $-0.75\%/yr$ [21].

TABLE II

ASTRONOMICAL SOURCE DATA PERTAINING TO FIGURES 7 AND 8.

are made unequal by the effects of mutual coupling. The effects of mutual coupling on the antenna patterns is difficult to know precisely. However since our goal is to compute (broadband) delays, as opposed to (narrowband) phases and magnitudes, calibration in a single direction is sufficient, as will be demonstrated in the next section. The entire procedure requires on the order of a week, typically observing over the same one-hour LST range at a different frequency each day.

V. BEAMFORMING PERFORMANCE

A. Multi-frequency Drift Scan at $Z = 6.7^\circ$

Figures 9 and 10 show a single transit drift scan of Cyg A; i.e., the output of a fixed beam pointed at the location in the sky at which Cyg A achieves upper culmination: $Z = 6.7^\circ$, 0° north azimuth. Cyg A is useful as a test source both because it is the strongest time-invariant and unresolved astronomical source visible from the LWA1 site, and also because it transits close to the zenith. The origin in both plots corresponds to the time at which Cyg A is expected to peak; Figure 2 shows the sky at this time. The results for a narrow bandwidth at 8 distinct center frequencies ranging

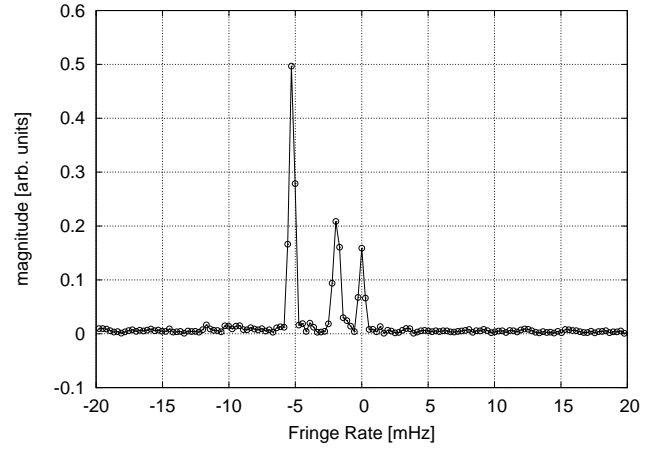


Fig. 8. Fringe rate spectrum corresponding to Figure 7. This result is dominated by two bright sources (these happen to be the radio galaxy Cygnus A (Cyg A) and the supernova remnant Cassiopeia A (Cas A)) and a “DC” term. The DC term is the “all sky” contribution predicted in [9], and stands as additional evidence that the observation is strongly external noise-dominated. Many other sources are present, but are orders of magnitude weaker. The frequency resolution is $279 \mu\text{Hz}$.

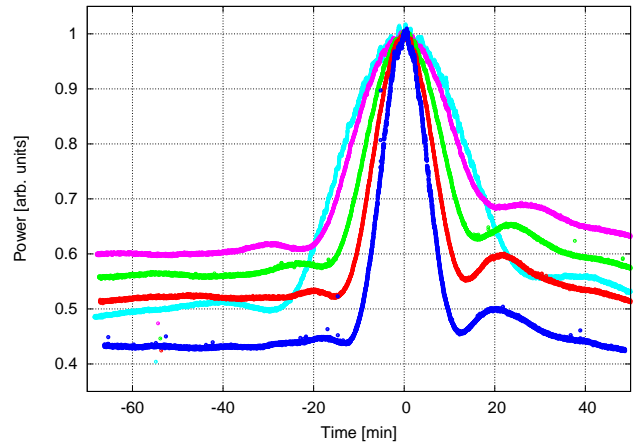


Fig. 9. Simultaneous drift scans of Cyg A at 85.00, 74.03, 62.90, 52.00, and 37.90 MHz. Scans can be identified by peak width, which increases with decreasing frequency. All scans are normalized to a common maximum. Bandwidth: 211 kHz, Integration time: 786 ms, Single (N-S) polarization, no RFI mitigation.

from 20.5 through 85.6 MHz are shown. The large peak in each curve is Cyg A; the small peak to the right in some curves is the Galactic plane passing through the beam a short time later (apparent only at higher frequencies and unresolved in lower-frequency curves). Note that Cyg A is clearly detectable at all frequencies, demonstrating the very wide instantaneous bandwidth of the instrument. Also apparent is the broadening of the beamwidth with decreasing frequency, as expected. The lowest two frequencies (28.80 and 20.50 MHz) are shown in a separate figure for clarity; both frequencies are apparently strongly affected by ionospheric scintillation, and 20.05 MHz is strongly affected by RFI.

The drift scans for each frequency in Figure 9 and 10 are normalized to the same peak value to facilitate comparison

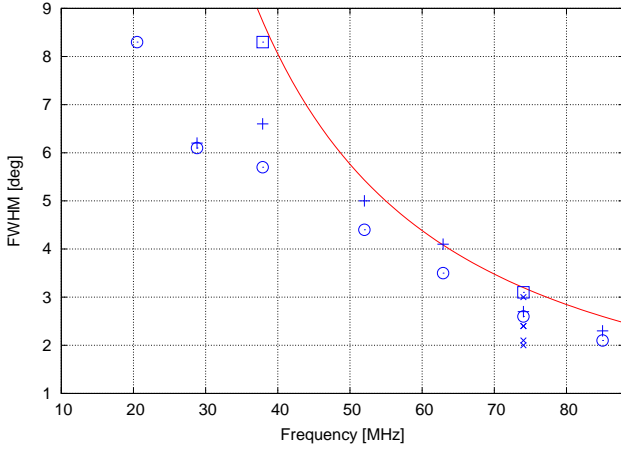


Fig. 12. Beamwidth (FWHM) vs. frequency obtained from drift scans. Markers indicate Z : “o”, 6.7° ; “+”, 25° ; square, 45° ; all using Cyg A. “x” are 74.03 MHz results using transit drift scans from the same additional sources identified in the caption of Figure 11, all at 74.03 MHz. The solid line is the upper bound described in the text.

inability of the method of Appendix A to account for the excess emission associated with the nearby Galactic plane. Also shown in Figure 12 is an empirical upper bound on all measurements (regardless of Z) considered to date:

$$\text{FWHM} < 3.2^\circ \times \left(\frac{74 \text{ MHz}}{\nu} \right)^{1.5}. \quad (3)$$

We intend to improve on this bound in future measurements by using interferometric methods, as discussed in Section VI.

VI. CONCLUSIONS

This paper described the design of the LWA1 radio telescope, array calibration technique, and the results of commissioning experiments to confirm beamforming performance. The “single point” delay calibration technique currently in use at LWA1 was described in Section IV. In this technique, the delays are estimated from phase estimates over a range of frequencies using narrowband “all-dipoles” (TBN) observations of the sky. This technique uses a fringe rate filtering technique which is robust to the presence of multiple bright sources including both unresolved and spatially-extended sources. Real time delay-and-sum beamforming was demonstrated in Section V. Sensitivity findings are summarized in Figure 11, and were shown to be consistent with predictions made in [9]. Beamwidth findings are summarized in Figure 12. Due to the limitations of the drift scan measurement technique employed in this paper, we can currently only upper-bound our estimates of beamwidth. In future measurements we intend to cross-correlate drift scan beams with outrigger dipoles, which is expected to suppress the contribution of diffuse Galactic emission and result in more accurate measurement of beamwidth. The same technique will enable characterization of sidelobes, which is not possible with the drift scan technique. We also plan to conduct measurements to characterize polarization performance. The results presented here combined with early

science results described in [3] confirm that LWA1 performance is consistent with expectations and that the instrument is ready for science operations.

APPENDIX A

ESTIMATION OF BEAMWIDTH FROM A DRIFT SCAN

The peak-to-baseline ratios achieved in drift scans such as those shown in Figures 9 and 10 are too low to facilitate calculation of beam FWHM by direct inspection. However it is possible to estimate FWHM by modeling the drift scan as the sum of a Gaussian function representing the power pattern of the main lobe plus a constant noise floor, solving for the coefficient of time in the exponent of the Gaussian function, and then calculating the associated width of the Gaussian function alone. In this appendix we first derive the result, and then we justify the use of the Gaussian approximation.

The drift scan is modeled as :

$$y(t) = A + Be^{-\gamma t^2} \quad (4)$$

where A is the magnitude of the constant noise baseline, B is the peak magnitude of the Gaussian function modeling the main lobe, and t is time. Evaluating this expression at the time $t = 0$, taken to be the time at which the peak occurs, and time t_1 , a short time later, we have:

$$y(0) = A + B \quad (5)$$

$$y(t_1) = A + Be^{-\gamma t_1^2}. \quad (6)$$

Solving for γ :

$$\gamma = \frac{\ln(y(0) - A) - \ln(y(t_1) - A)}{t_1^2}. \quad (7)$$

FWHM corresponds to the time interval between the half-maximum points of the Gaussian function, which is easily found to be

$$\text{FWHM} = 2\sqrt{\frac{\ln 2}{\gamma}}. \quad (8)$$

The normalized (i.e., maximum magnitude = 1) pattern function of a uniformly-illuminated circular aperture lying in the plane of the ground is [23]:

$$F(Z) = 2 \frac{J_1(\beta a \sin Z)}{\beta a \sin Z}, \quad (9)$$

where a is the radius of the aperture, $\beta = 2\pi/\lambda$, and λ is wavelength. Thus the normalized power pattern is $F^2(Z)$. Let us assume that the main lobe of $F^2(Z)$ can be modeled as a Gaussian function $y(Z/c)$, where c is the angular rate of drift. For purposes of demonstration let us assume $a/\lambda = 12.3$, modeling LWA1 at 74 MHz. We take $A = 0$, $y(0) = 1$, $y(t_1 = Z_1/c) = F^2(Z_1) = 0.9$, and then use Equation 9 to find $ct_1 = 0.475^\circ$. Figure 13 compares $F^2(Z)$ to the derived model $y(Z/c)$ with γ obtained from Equation 7. Note that the model error at the half-maximum point is very small, justifying the use of the Gaussian model for this purpose.

Finally, we note that the model has not been demonstrated to be appropriate for beam pointings far from the zenith. However, we note that we do not have a “true” model available

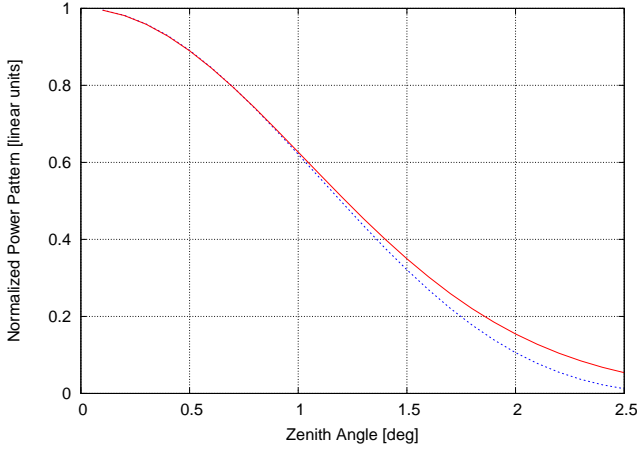


Fig. 13. Comparison of the Gaussian main lobe model $y(cZ)$ (blue/dashed) to the “true” main lobe power pattern $F^2(Z)$ (red/solid) for $a/\lambda = 12.3$, modeling an LWA1 zenith-pointing beam at 74 MHz.

for this case either, since the patterns of individual antennas combined with mutual coupling make this difficult to know. This caveat should be considered when evaluating results computed for low-elevation pointings.

APPENDIX B

CALCULATION OF SEFD FROM DRIFT SCANS

When the flux density of the source is known, beam system equivalent flux density (SEFD) can be estimated from drift scans such as those shown in Figures 9 and 10. A derivation follows. The power density P_s captured in one polarization of the beam associated with an unpolarized source having flux density S is given by

$$P_s = \frac{1}{2} S A_e \quad (10)$$

where A_e is the effective aperture. Similarly, the power density N captured in one polarization of the beam associated with the total available noise is given by

$$N = \frac{1}{2} k T_{sys} \quad (11)$$

where k is Boltzmann’s constant and T_{sys} is the system noise temperature, assuming this to be external noise-dominated. Thus the signal-to-noise ratio at the beam output is

$$\frac{P_s}{N} = \frac{S A_e}{k T_{sys}} \quad (12)$$

In these terms, the SEFD for this polarization is defined as the value of S which results in $P_s/N = 1$; thus:

$$\text{SEFD} = \frac{k T_{sys}}{A_e} \quad (13)$$

Let $P_1 = P_s + N$ be the power density measured at the peak of the drift scan, and let $P_0 = N$ be the power density in the absence of the source. Note P_0 can be estimated from the approximately-constant noise baseline on either side of the peak. Using the above definitions, we find

$$\frac{P_1}{P_0} = \frac{\frac{1}{2} S A_e + \frac{1}{2} k T_{sys}}{\frac{1}{2} k T_{sys}} = \frac{S}{\text{SEFD}} + 1 \quad (14)$$

Solving for SEFD:

$$\text{SEFD} = S \left(\frac{P_1}{P_0} - 1 \right)^{-1} \quad (15)$$

Thus, given the source flux density, the single-polarization SEFD can be obtained from P_1 and P_0 , which themselves can be read from the drift scan. Assuming an unpolarized source and orthogonal polarizations, the two-polarization SEFD is lower by a factor of $\sqrt{2}$. This is not exact, since the patterns of the two polarizations are slightly different; however the corresponding error is typically small, as is confirmed by comparison of the drift scans for polarization pairs.

ACKNOWLEDGMENTS

The authors acknowledge contributions to the design and commissioning of LWA1 made by S. Burns of Burns Industries; L. D’Addario, R. Navarro, M. Soriano, E. Sigman, and D. Wang of NASA Jet Propulsion Laboratory; N. Paravastu and H. Schmitt of the U.S. Naval Research Laboratory; S. Tremblay of the University of New Mexico; and M. Harun, Q. Liu, and C. Patterson of Virginia Tech.

Construction of LWA1 has been supported by the U.S. Office of Naval Research under Contract N00014-07-C-0147. Support for operations and continuing development of LWA1 is provided by the National Science Foundation under Grant AST-1139963. Basic research in radio astronomy at the Naval Research Laboratory is supported by 6.1 base funding. The authors acknowledge the support of the National Radio Astronomy Observatory.

REFERENCES

- [1] S.W. Ellingson *et al.*, “The Long Wavelength Array,” *Proc. IEEE*, Vol. 97, No. 8, Aug 2009, pp. 1421–30.
- [2] N.E. Kassim *et al.*, “The Long Wavelength Array,” *ASP Conf. Ser.*, Vol. 345, 2005, pp. 392–8.
- [3] G.B. Taylor *et al.*, “First Light for the First Station of the Long Wavelength Array,” *J. Astronomical Instrumentation*, submitted. Preprint available as Long Wavelength Array Memo 185 at <http://www.ece.vt.edu/swe/lwa/>.
- [4] <http://www.iiap.res.in/centers/radio>.
- [5] S.Y. Braude *et al.*, “Decametric Survey of Discrete Sources in the Northern Sky: I. The UTR-2 radio telescope. Experimental techniques and data processing,” *Astrophys. Space Sci.*, vol. 54, pp. 3–36, 1978.
- [6] N.E. Kassim *et al.*, “The 74 MHz System on the Very Large Array,” *Astrophys. J. Supp. Ser.*, vol. 172, pp. 686–719, Oct. 2007.
- [7] M. de Vos, A.W. Gunst, and R. Nijboer, “The LOFAR telescope: System architecture and signal processing,” *Proc. IEEE*, vol. 97, no. 8, pp. 1431–1437, Aug. 2009.
- [8] S.J. Wijnholds & W.A. van Cappellen, “In Situ Antenna Performance Evaluation of the LOFAR Phased Array Radio Telescope,” *IEEE Transactions on Antennas and Propagation*, Vol. 59, no. 6, pp. 1981–1989, June 2011.
- [9] S. W. Ellingson, “Sensitivity of Antenna Arrays for Long-Wavelength Radio Astronomy,” *IEEE Trans. Ant. & Prop.*, Vol. 59, No. 6, June 2011, pp. 1855–1863.
- [10] R.G. Stone, K.W. Weiler, M.L. Goldstein & J.-L. Bougeret (eds.), *Radio Astronomy at Long Wavelengths*, Geophysical Monograph 119, American Geophysical Union, 2000.
- [11] N. E. Kassim, M. R. Perez, W. Junor, and P. A. Henning (eds.), *Clark Lake to the Long Wavelength Array: Bill Erickson’s Radio Science*, ASP Conf. Ser., Vol. 345, 2005.
- [12] S.W. Ellingson, “Antennas for the Next Generation of Low Frequency Radio Telescopes,” *IEEE Trans. Ant. & Prop.*, Vol. 53, No. 8, August 2005, pp. 2480–9.

- [13] S.W. Ellingson, J.H. Simonetti, and C.D. Patterson, "Design and Evaluation of an Active Antenna for a 29-47 MHz Radio Telescope Array," *IEEE Trans. Ant. & Prop.*, Vol. 55, No. 3, March 2007, pp. 826-831.
- [14] S. Ellingson, "LWA Analog Signal Path Planning, Ver. 2," Long Wavelength Array Memo 121, Feb 3, 2008. <http://www.ece.vt.edu/swe/lwa/>.
- [15] S. Ellingson, J. Craig, and J. Hartman, "LWA1 Antenna Position and Cable Data," Ver. 3, Long Wavelength Array Memo 170, December 9, 2010. <http://www.ece.vt.edu/swe/lwa/>.
- [16] S. Ramo and J.R. Whinnery, *Fields and Waves in Modern Radio*, Wiley, 1953. Chapter 6.
- [17] Soriano, M., Navarro, R., D'Addario, L., Sigman, E. & Wang, D. 2011, "Implementation of a Digital Signal Processing Subsystem for a Long Wavelength Array Station, *Proc. 2011 IEEE Aerospace Conf.*, Big Sky, MT.
- [18] S. Ellingson, "Fun with TBN," Long Wavelength Array Memo 184, September 13, 2011. <http://www.ece.vt.edu/swe/lwa/>.
- [19] A.R. Parsons and D.C. Backer, "Calibration of Low-Frequency, Wide-Field Radio Interferometers Using Delay/Delay-Rate Filtering," *Astronomical J.*, Vol. 138, No. 1, July 2009, pp. 219-226.
- [20] J. Hartman, "Antenna pattern measurements from a two-element interferometer," Long Wavelength Array Memo 155, Apr 15, 2009. <http://www.ece.vt.edu/swe/lwa/>.
- [21] J. F. Helmboldt and N. E. Kassim, "The Evolution of Cas A at Low Radio Frequencies," *Astronomical J.*, Vol. 138, No. 3, Sep 2009, pp. 838-44.
- [22] J.W.M. Baars, R. Genzel, I.I.K. Pauliny-Toth and A. Witzel, "The Absolute Spectrum of Cas A; An Accurate Flux Density Scale and a Set of Secondary Calibrators," *Astronomy & Astrophysics*, Vol. 61, 1977, pp. 99-106.
- [23] W.L. Stutzman & G.A. Thiele, *Antenna Theory and Design*, 2nd. Ed., Wiley, 1998.